

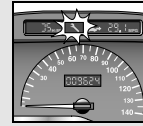
CADILLAC

Service Interval Indicator

Model:

Year:

CTS	2002-06
DeVille	1994-05
Eldorado	1994-02
Escalade	1999-06
Fleetwood	1994-95
Seville	1994-04
SRX	2003-06
STS	2005-06
XLR	2005-06



■ CTS 2002-06

With Navigation system

Press PWR/VOL button.
Press INFO button to enter information menu.
Turn TUNE/SEL button until ENGINE OIL LIFE is highlighted.
Press TUNE/SEL button.
Press and hold RESET button.
Oil life display will change to 100%.

■ DeVille 1994-97

■ DeVille 1999-05

■ Eldorado 1994-97

■ Eldorado 1999-02

■ Fleetwood 1994-95

■ Seville 1994-97

■ Seville 1999-04

■ SRX 2003-06

With Driver Information Center (DIC)

Switch ignition ON.
Using Info button, select Oil Life display.
Press and hold CLR or RESET button for 5 seconds.
Oil life display will change to 100%.

With Navigation system

Engine running.
Press PWR/VOL button.
Press and hold INFO button to enter information menu.
Select Engine oil life.
Press and hold RESET button.
Oil life display will change to 100%.

■ DeVille 1998

■ Eldorado 1998

■ Seville 1998

With Driver Information Center (DIC)

Turn the ignition to RUN.
Press the TRIP button on the driver information center to view oil life remaining.
Press and hold the RESET button on the driver information center for more than 5 seconds.
The oil life will change to 100%. The engine oil life monitor is now reset.
Turn the ignition OFF.

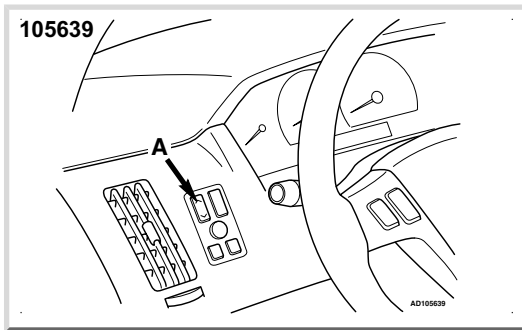
■ **Escalade 1999-06**

■ **Fleetwood 1994-95**

Switch ignition ON.
 Slowly depress and release the accelerator pedal
 3 times within 5 seconds.
 The Change Oil Soon lamp flashes indicating resetting.
 Switch ignition OFF. Then start the engine.
 Oil life will change to 100%.

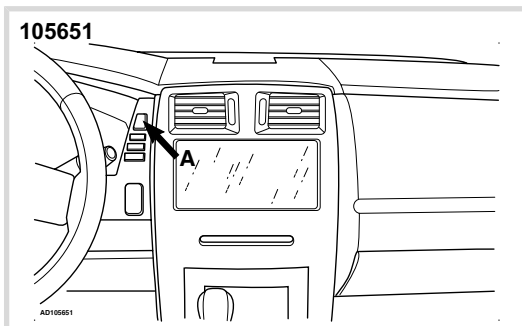
■ **STS 2005-06**

Switch ignition ON.
 Press button [A] **Fig. 105639** until ENGINE OIL
 LIFE is highlighted.
 Press and hold RESET button.
 Oil life display will change to 100%.



■ **XLR 2005-06**

Switch ignition ON.
 Press button [A] **Fig. 105651** until ENGINE OIL
 LIFE is highlighted.
 Press and hold RESET button.
 Oil life display will change to 100%.





Model:

Year:

CTS

2002-06

DeVille

2004

Remote alarm/central locking

System operation

- System LED location: In instrument panel.
- Pressing the remote transmitter UNLOCK button once deactivates the alarm and unlocks driver's door only.
- Pressing the remote transmitter UNLOCK button twice within two seconds deactivates the alarm and unlocks all doors.
- To activate alarm system - method 1:
 - Press remote transmitter LOCK button.
 - All doors will lock.
 - Security LED illuminates.
 - Security LED extinguishes after 30 seconds.
 - LED will extinguish when system activated.
- To activate alarm system - method 2:
 - Open driver's door.
 - Press remote transmitter LOCK button.
 - Security LED illuminates.
 - Close all doors.
 - Security LED extinguishes after 30 seconds.
 - LED will extinguish when system activated.
- Alarm/central locking functions can be altered using remote transmitter.

Synchronization

When

- Remote transmitter battery replaced.
- Vehicle battery in low or no charge condition.

How

- Stand within 5 ft of vehicle.
- Press any button on remote transmitter to resynchronize.
- Remote should now lock or unlock vehicle.

Programming

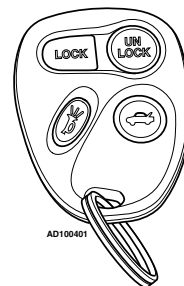
When

- Remote transmitter added or replaced.
- System malfunction.

How

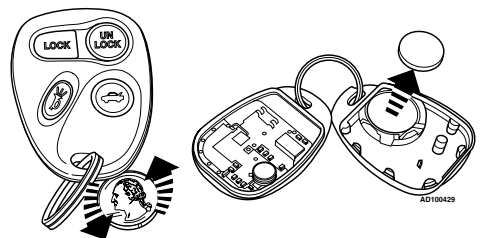
- Remote transmitter can only be programmed using diagnostic equipment.
- Existing remote transmitters must be reprogrammed otherwise they will be unusable.

100401



Battery replacement

100429



Immobilizer

System operation

- Arms after removing ignition key.

Programming

When

- System malfunction.
- Key added or replaced.

How - without original master key

- Switch ignition ON with master key to be programmed.
- System LED will illuminate.
- After approximately 10 minutes system LED will switch OFF.
- Switch ignition OFF.
- Wait 5 seconds.
- Switch ignition ON.
- System LED will illuminate.
- After approximately 10 minutes system LED will switch OFF.
- Switch ignition OFF.
- Wait 5 seconds.
- Switch ignition ON.
- System LED will illuminate.
- After approximately 10 minutes system LED will switch OFF.
- Switch ignition OFF.
- Wait 5 seconds.
- Start engine.
- New master key now programmed.
- Erase stored trouble codes.
- Replacement parts can also be programmed using diagnostic equipment.

How - with original master key

- Insert master key into ignition switch.
- Switch ignition ON.
- Switch ignition OFF.
- Remove master key.
- Within 10 seconds insert new key.
- Switch ignition ON.
- New key now programmed.

NOTE: A maximum of 10 keys can be programmed using the master key.